



Vancouver Film Studios

Certified



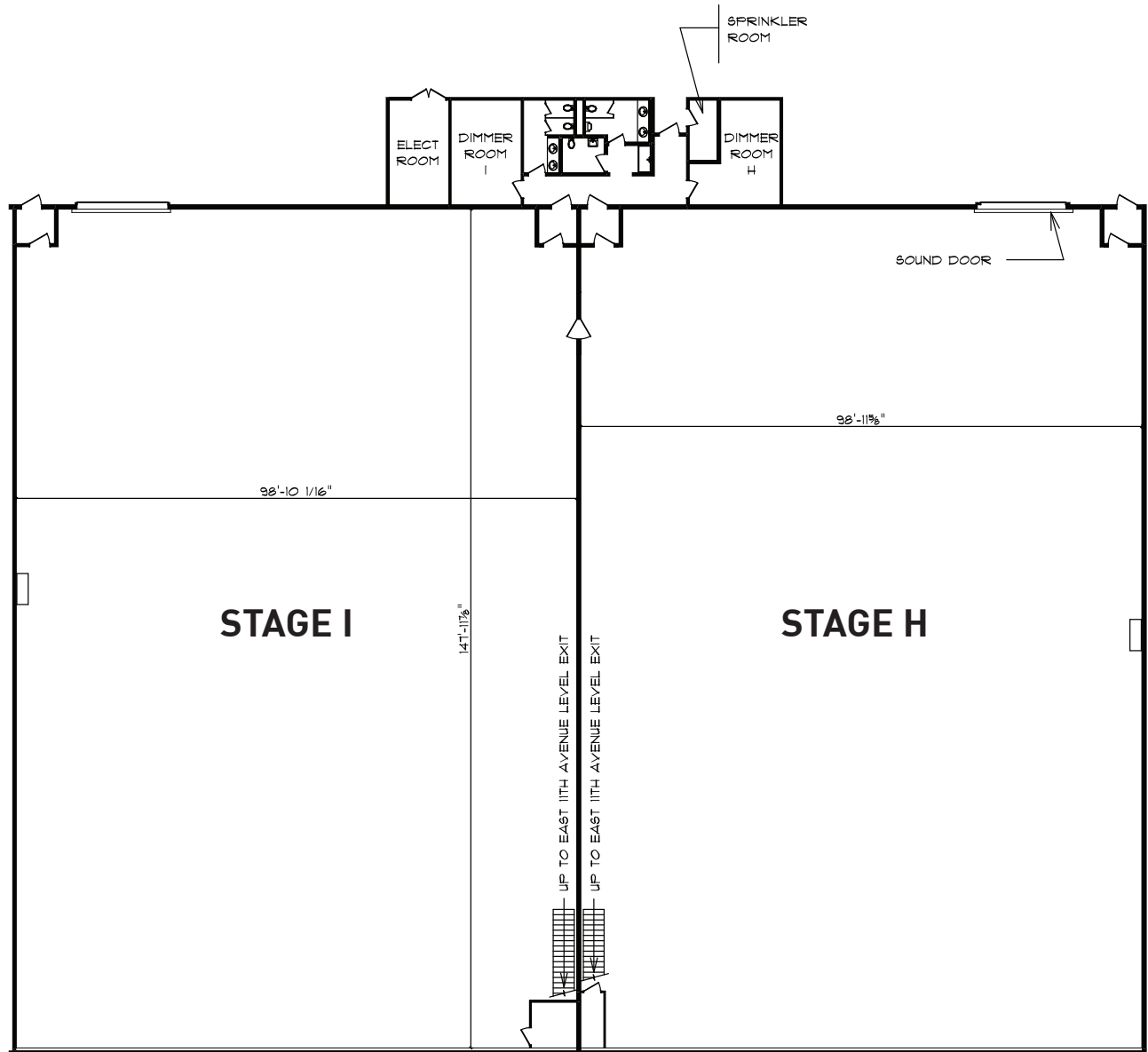
Corporation

Building H is a 15,000 sq. ft. sound stage.
All buildings on the Vancouver Film Studios lot are equipped with 24-hour security.

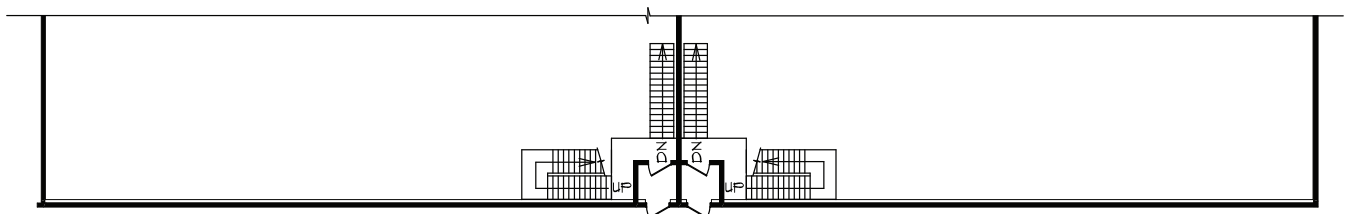


STAGE H

SQUARE FEET	15,000
DIMENSIONS	100' x 150'
HEIGHT	40'
SOUND	Building acoustically designed with tilt up concrete walls Acoustical insulation on walls and ceiling 16' x 16' sound door
POWER	3200 amps 120/208v 40 watts per sq. ft. 3 phase power services from two locations, each with four 400 amp camlocks Director control plugs throughout stage
AIR	Heating and fresh air exchange Mechanical atmospheric smoke exhaust Ceiling fans
STRUCTURE	Wooden catwalk system Truss system for rigging and lights Truss load of 40 lbs/squ. ft. (average), max point load of 3,500 lbs. per truss Clearspan 16' x 16' overhead door



CORNETT ROAD LEVEL



EAST 11TH AVENUE LEVEL

