



**Vancouver Film Studios**

Certified



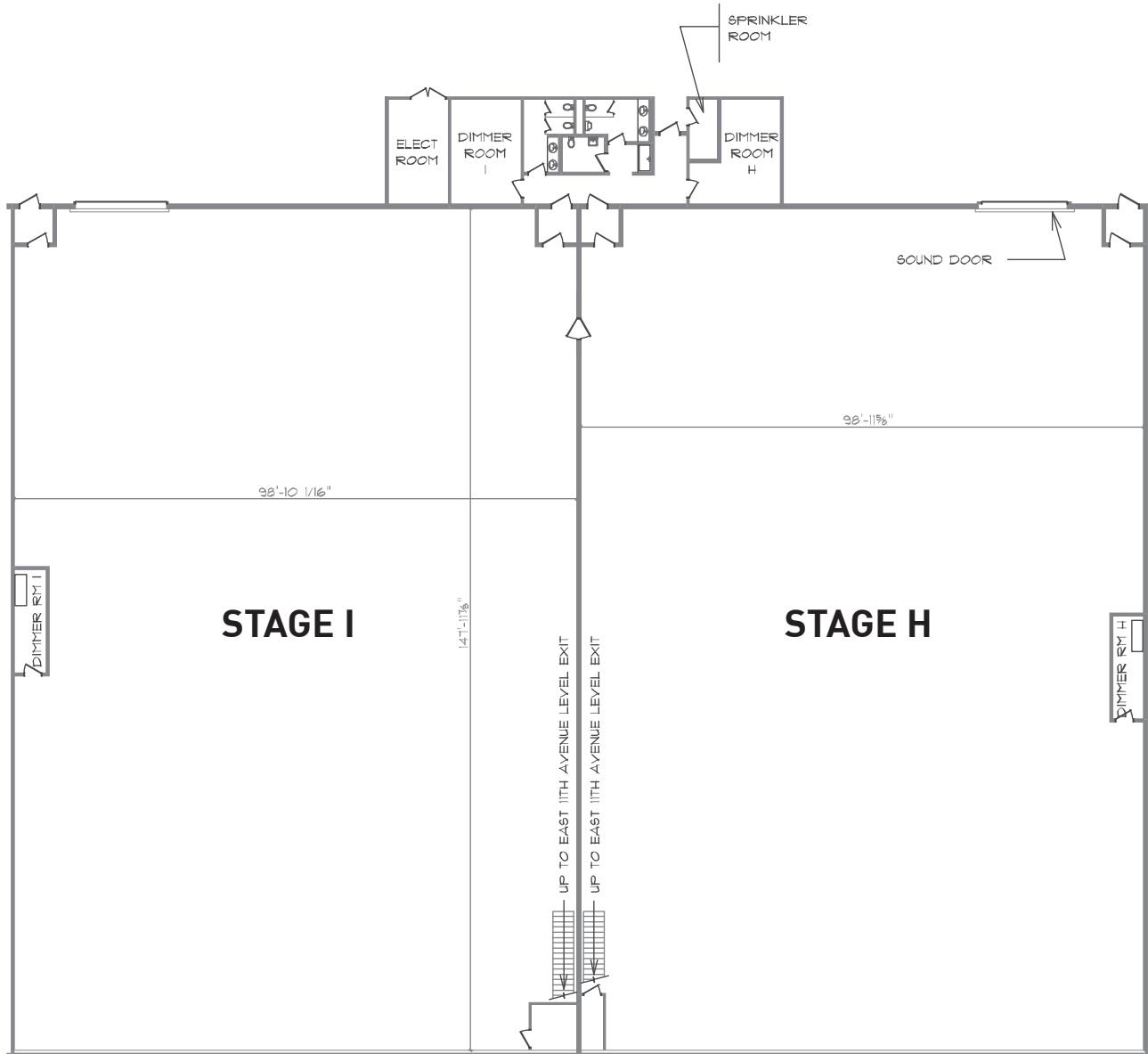
Corporation

Building H is a 15,000 sq. ft. sound stage.  
All buildings on the Vancouver Film Studios lot are equipped with 24-hour security.

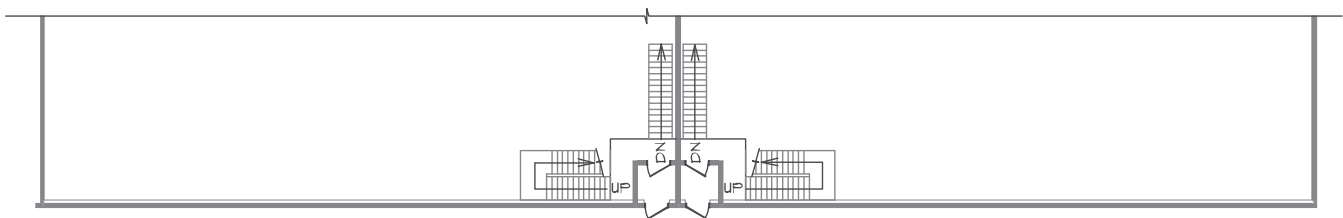


## STAGE H

<b>SQUARE FEET</b>	15,000
<b>DIMENSIONS</b>	100' x 150'
<b>HEIGHT</b>	40'
<b>SOUND</b>	Building acoustically designed with tilt up concrete walls Acoustical insulation on walls and ceiling 16' x 16' sound door
<b>POWER</b>	3200 amps 120/208v 40 watts per sq. ft. 3 phase power services from two locations, each with four 400 amp camlocks Director control plugs throughout stage
<b>AIR</b>	Heating and fresh air exchange Mechanical atmospheric smoke exhaust Ceiling fans
<b>STRUCTURE</b>	Wooden catwalk system Truss system for rigging and lights Truss load of 40 lbs/squ. ft. (average), max point load of 3,500 lbs. per truss Clearspan 16' x 16' overhead door



CORNETT ROAD LEVEL



EAST 11TH AVENUE LEVEL

