



**Vancouver Film Studios**



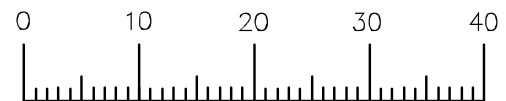
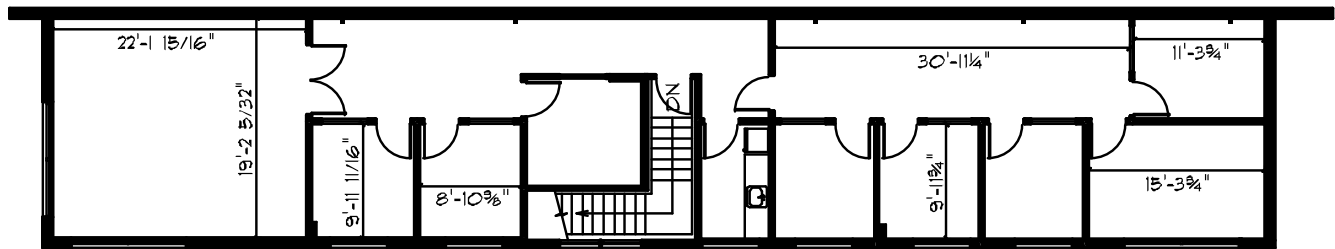
Building D consists of two sound stages and an adjoining 2nd level office space. Stage D1 is 21,000 sq. ft., Stage D2 is 15,000 sq. ft and D offices are 2,175 sq. ft featuring 8 private offices, Kitchen, and Bathroom. All buildings on the Vancouver Film Studios lot are equipped with 24-hour security.



## BUILDING D OFFICES

**SQUARE FEET** 2,175

**FEATURES** 8 private offices, kitchen and large boardroom



FEET



**Vancouver Film Studios**

Certified



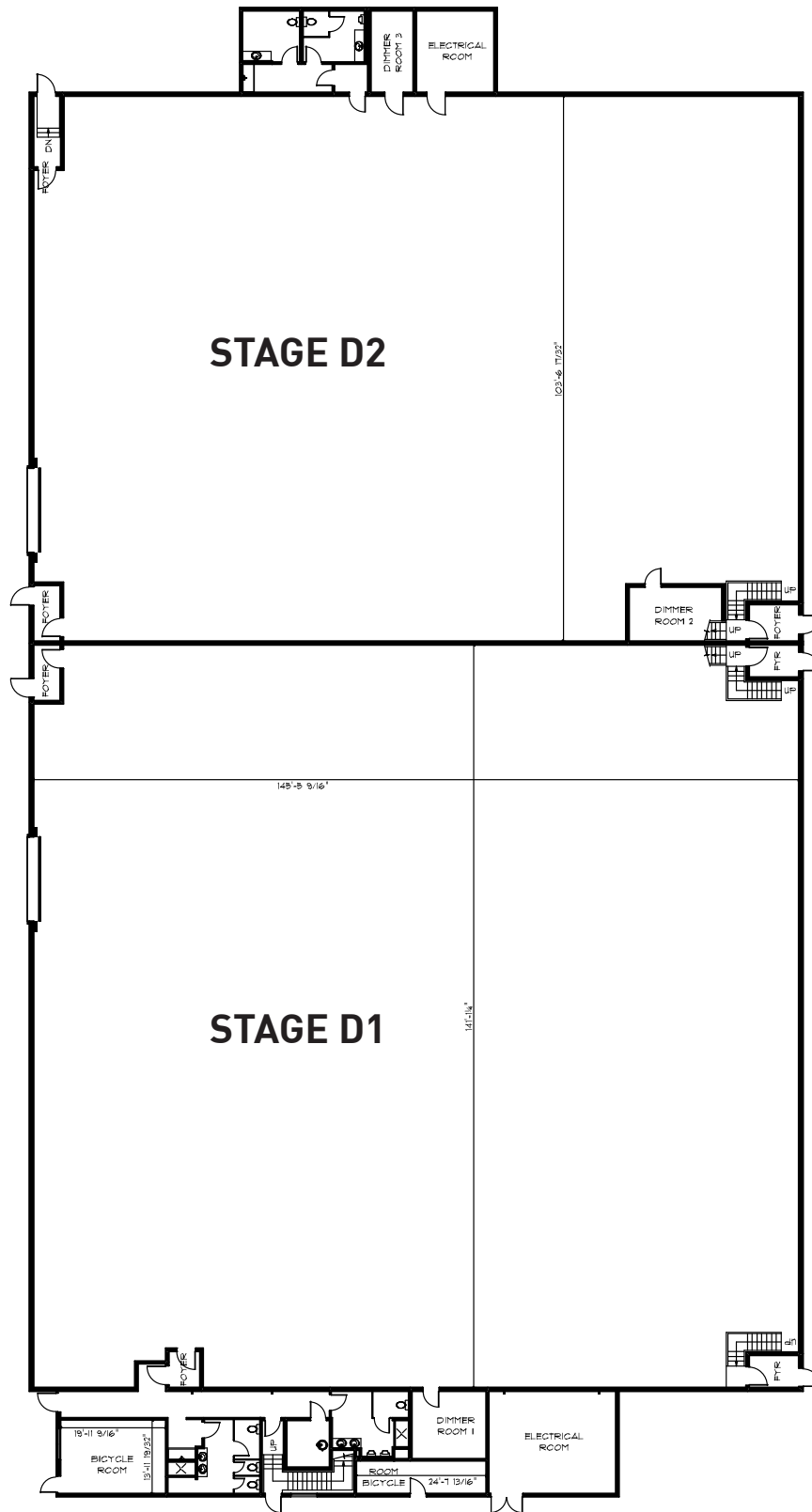
Corporation

Building D consists of two sound stages and an adjoining 2nd level office space. Stage D1 is 21,000 sq. ft., Stage D2 is 15,000 sq. ft and D offices are 2,175 sq. ft featuring 8 private offices, Kitchen, and Bathroom. All buildings on the Vancouver Film Studios lot are equipped with 24-hour security.

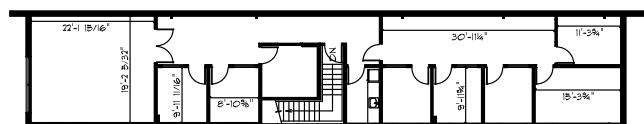


## STAGE D1

<b>SQUARE FEET</b>	21,000
<b>DIMENSIONS</b>	140' x 150'
<b>HEIGHT</b>	40'
<b>SOUND</b>	Building acoustically designed with tilt up concrete walls Acoustical insulation on walls and ceiling 16' x 16' sound door
<b>POWER</b>	3500 amps 120/208v 40 watts per sq. ft. 3 phase power services throughout stage Director control plugs throughout stage
<b>AIR</b>	Heating and fresh air exchange Mechanical atmospheric smoke exhaust Ceiling fans
<b>STRUCTURE</b>	Wooden catwalk system Truss system for rigging and lights Truss load of 40 lbs/squ. ft. (average), max point load of 3,500 lbs. per truss Clearspan 16' x 16' overhead door



### BUILDING D OFFICES





**Vancouver Film Studios**

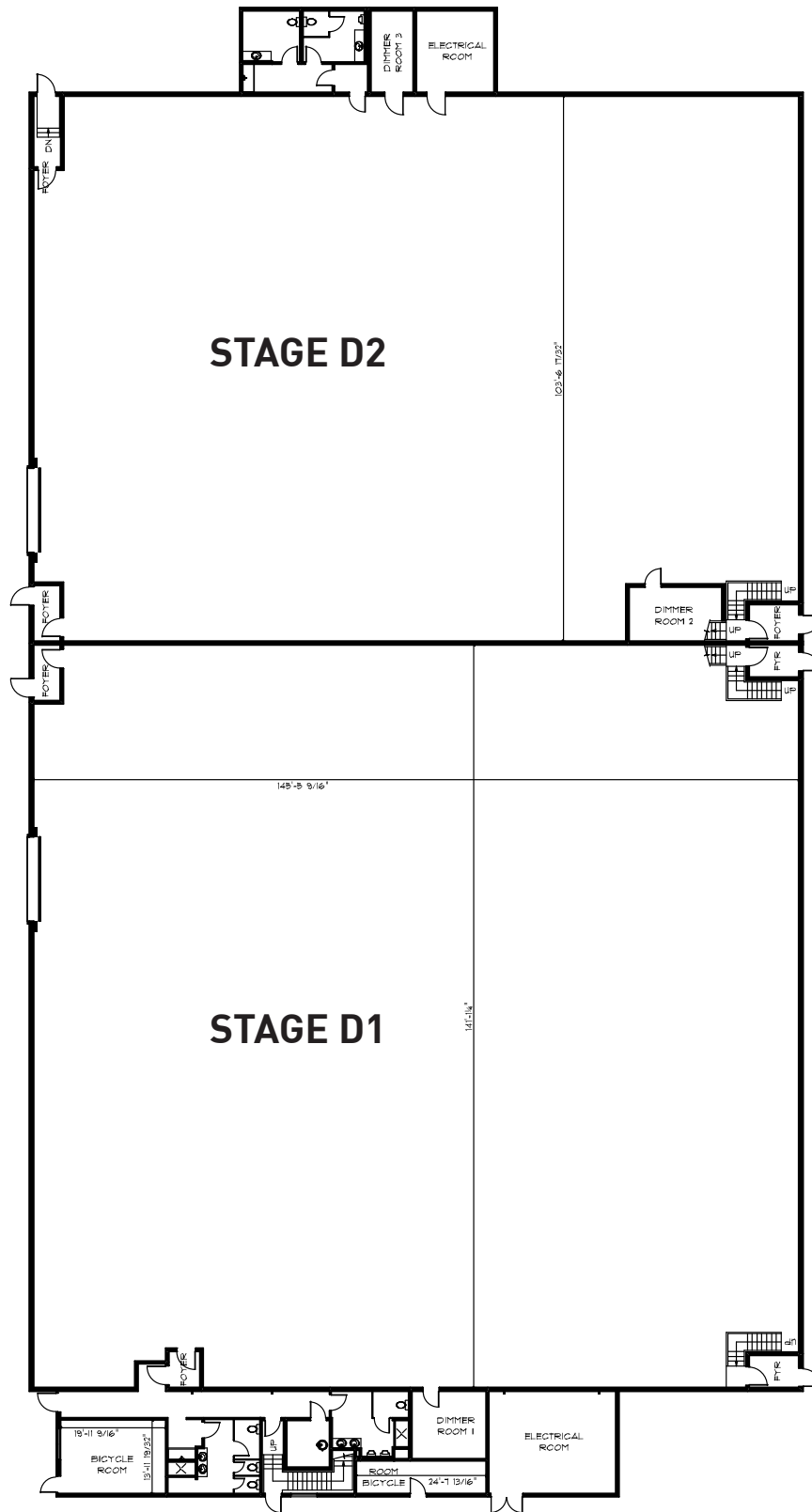


Building D consists of two sound stages and an adjoining 2nd level office space. Stage D1 is 21,000 sq. ft., Stage D2 is 15,000 sq. ft and D offices are 2,175 sq. ft featuring 8 private offices, Kitchen, and Bathroom. All buildings on the Vancouver Film Studios lot are equipped with 24-hour security.

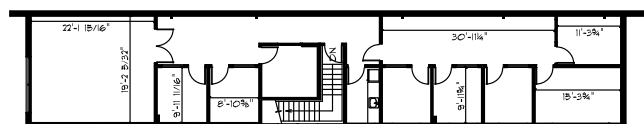


## STAGE D2

<b>SQUARE FEET</b>	15,000
<b>DIMENSIONS</b>	100' x 150'
<b>HEIGHT</b>	40'
<b>SOUND</b>	Building acoustically designed with tilt up concrete walls Acoustical insulation on walls and ceiling 16' x 16' sound door
<b>POWER</b>	3200 amps 120/208v 40 watts per sq. ft. 3 phase power services throughout stage Director control plugs throughout stage
<b>AIR</b>	Heating and fresh air exchange Mechanical atmospheric smoke exhaust Ceiling fans
<b>STRUCTURE</b>	Wooden catwalk system Truss system for rigging and lights Truss load of 40 lbs/squ. ft. (average), max point load of 3,500 lbs. per truss Clearspan 16' x 16' overhead door



### BUILDING D OFFICES



OFFICE  
MEZZANINE

