



Vancouver Film Studios



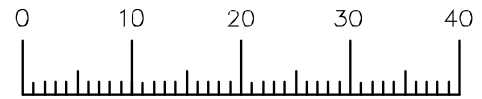
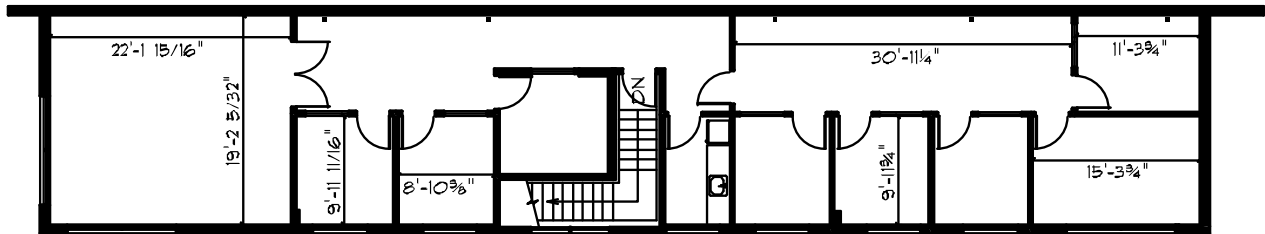
Building D consists of two sound stages and an adjoining 2nd level office space. Stage D1 is 21,000 sq. ft., Stage D2 is 15,000 sq. ft and D offices are 2,175 sq. ft featuring 8 private offices, Kitchen, and Bathroom. All buildings on the Vancouver Film Studios lot are equipped with 24-hour security.



BUILDING D OFFICES

SQUARE FEET 2,175

FEATURES 8 private offices, kitchen and large boardroom



FFFT



Vancouver Film Studios

Certified



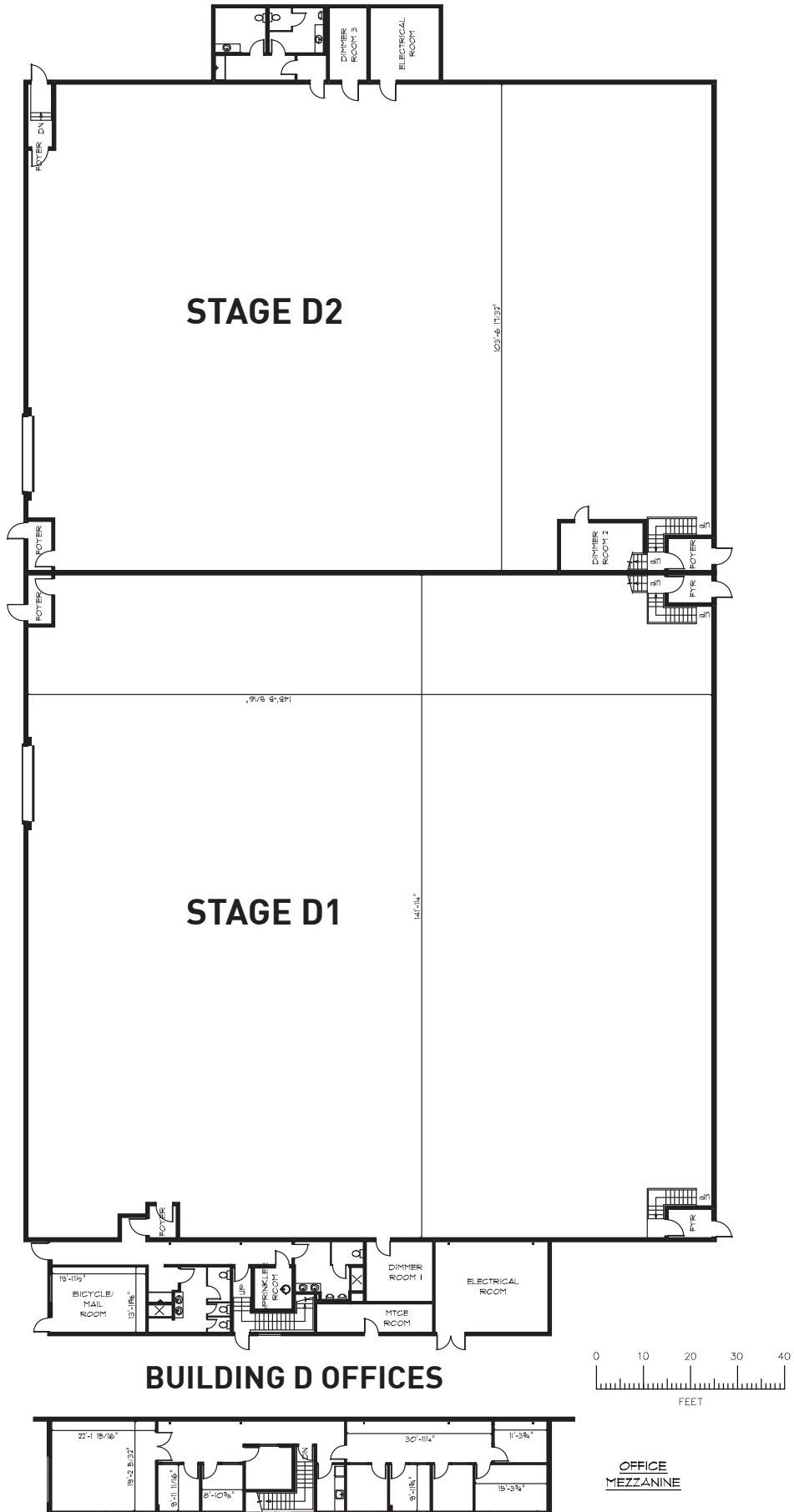
Corporation

Building D consists of two sound stages and an adjoining 2nd level office space. Stage D1 is 21,000 sq. ft., Stage D2 is 15,000 sq. ft and D offices are 2,175 sq. ft featuring 8 private offices, Kitchen, and Bathroom. All buildings on the Vancouver Film Studios lot are equipped with 24-hour security.



STAGE D1

SQUARE FEET	21,000
DIMENSIONS	140' x 150'
HEIGHT	40'
SOUND	Acoustical insulation 16' x 16' sound door Building acoustically designed with tilt up concrete walls
POWER	Directors control panels 40 watts per sq. ft. 3 phase power services from two locations, each with four camlocks
AIR	Mechanical smoke exhaust fans Fresh air exchange heating
STRUCTURE	Protective roll up doors Wooden catwalk system Truss system for lights Truss load of 40 lbs/sq. ft. (average), max point load of 3,500 lbs. per truss Clearspan





Vancouver Film Studios

Certified



Corporation

Building D consists of two sound stages and an adjoining 2nd level office space. Stage D1 is 21,000 sq. ft., Stage D2 is 15,000 sq. ft and D offices are 2,175 sq. ft featuring 8 private offices, Kitchen, and Bathroom. All buildings on the Vancouver Film Studios lot are equipped with 24-hour security.



STAGE D2

SQUARE FEET	15,000
DIMENSIONS	100' x 150'
HEIGHT	40'
SOUND	Acoustical insulation 16' x 16' sound door Building acoustically designed with tilt up concrete walls
POWER	Directors control panels, four points 40 watts per sq. ft. 3 phase power services from two locations, each with four camlocks
AIR	Mechanical smoke exhaust fans Fresh air exchange heating
STRUCTURE	Protective roll up doors Wooden catwalk system Truss system for lights Truss load of 40 lbs/sq. ft. (average), max point load of 3,500 lbs. per truss Clearspan

