

Building D

Building D consists of two sound stages and a large adjoining office space. Stage D1 21,000 sq. ft. Stage D2 15,000 sq. ft and D offices 2,175 sq. ft featuring 8 private offices and large Kitchen and Bathroom.

All buildings on the Vancouver Film Studios lot are equipped with 24-hour security.

Stage D1

SQUARE FEET	21,000
DIMENSIONS	140' x 150'
HEIGHT	40'
SOUND	Acoustical insulation 16' x 16' sound door Building acoustically designed with tilt up concrete walls
POWER	Directors control panels 40 watts per sq. ft. 3 phase power services from two locations, each with four camlocks
AIR	Mechanical smoke exhaust fan Fresh air exchange heating
STRUCTURE	Protective roll up doors Wooden catwalk system Truss system for lights Truss load of 40 lbs/sq. ft. (average), max point load of 3,500 lbs. per truss Clears

Stage D2

SQUARE FEET	15,000
DIMENSIONS	100' x 150'
HEIGHT	40'
SOUND	Acoustical insulation 16' x 16' sound door Building acoustically designed with tilt up concrete walls
POWER	Directors control panels 40 watts per sq. ft. 3 phase power services from two locations, each with four camlocks
AIR	Mechanical smoke exhaust fan Fresh air exchange heating
STRUCTURE	Protective roll up doors Wooden catwalk system Truss system for lights Truss load of 40 lbs/sq. ft. (average), max point load of 3,500 lbs. per truss Clears

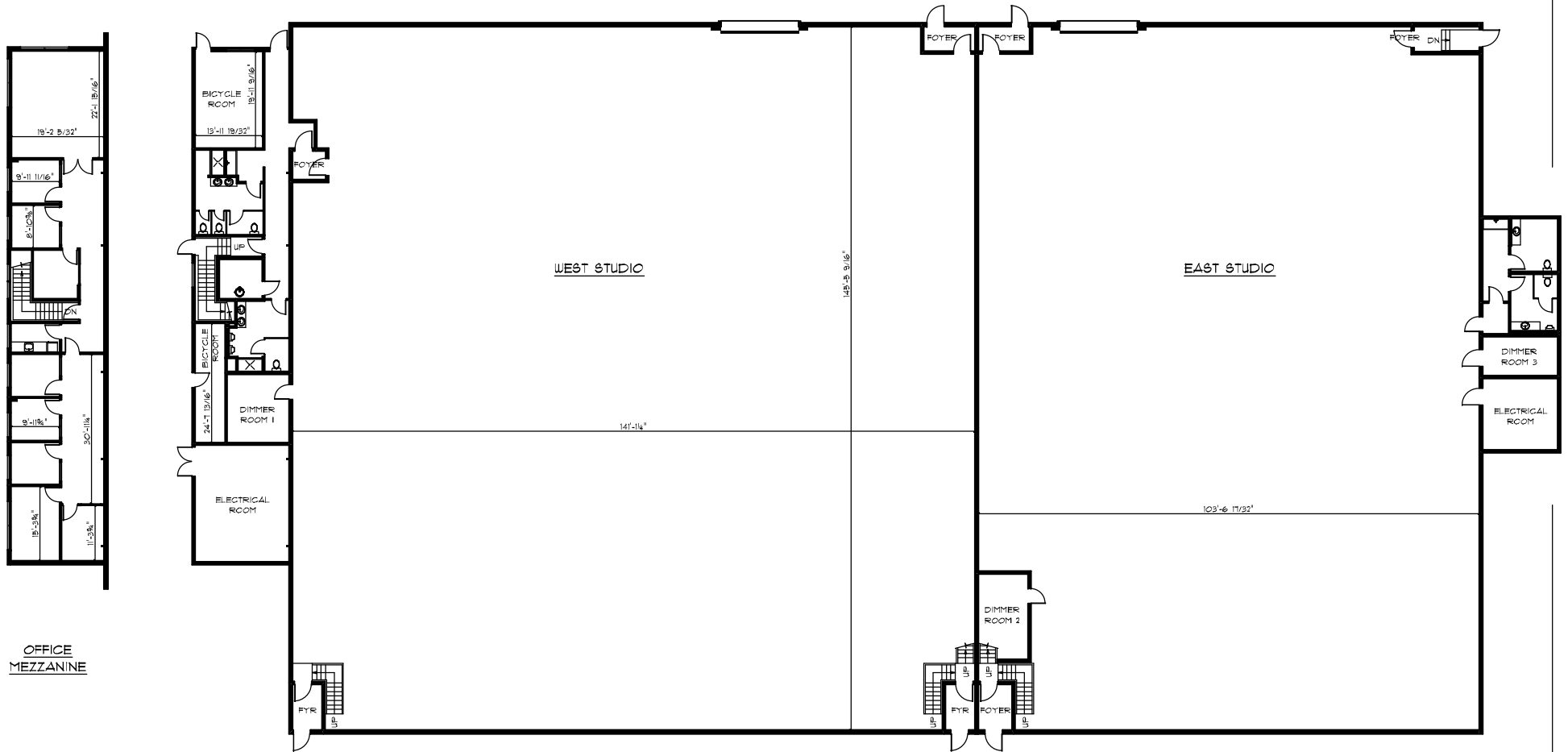
Building D Offices

SQUARE FEET	2,175
FEATURES	8 private offices, kitchen and large boardroom

DATE	REVISION DETAIL

NOTE:

1. AREA MEASUREMENTS ARE IN ACCORDANCE WITH BOMA/SIOR 2004 EXTERIOR WALL METHOD AND WITH BOMA Z65.1-1996.



OFFICE
MEZZANINE

VancouverFilmStudios

BUILDING D
3596 CORNETT ROAD
VANCOUVER BC

DRAWN BY:



GERRY PARSONS
BOMA CALGARY CERTIFIED TECHNICIAN

MARCH 25, 2013



the Parsons Group
Delta BC
604-512-1203
www.theparsonsgroup.ca

