

BUILDING I

Building I, adjacent to building H, is a 15,000 sq. ft. stage opened in April of 2003.

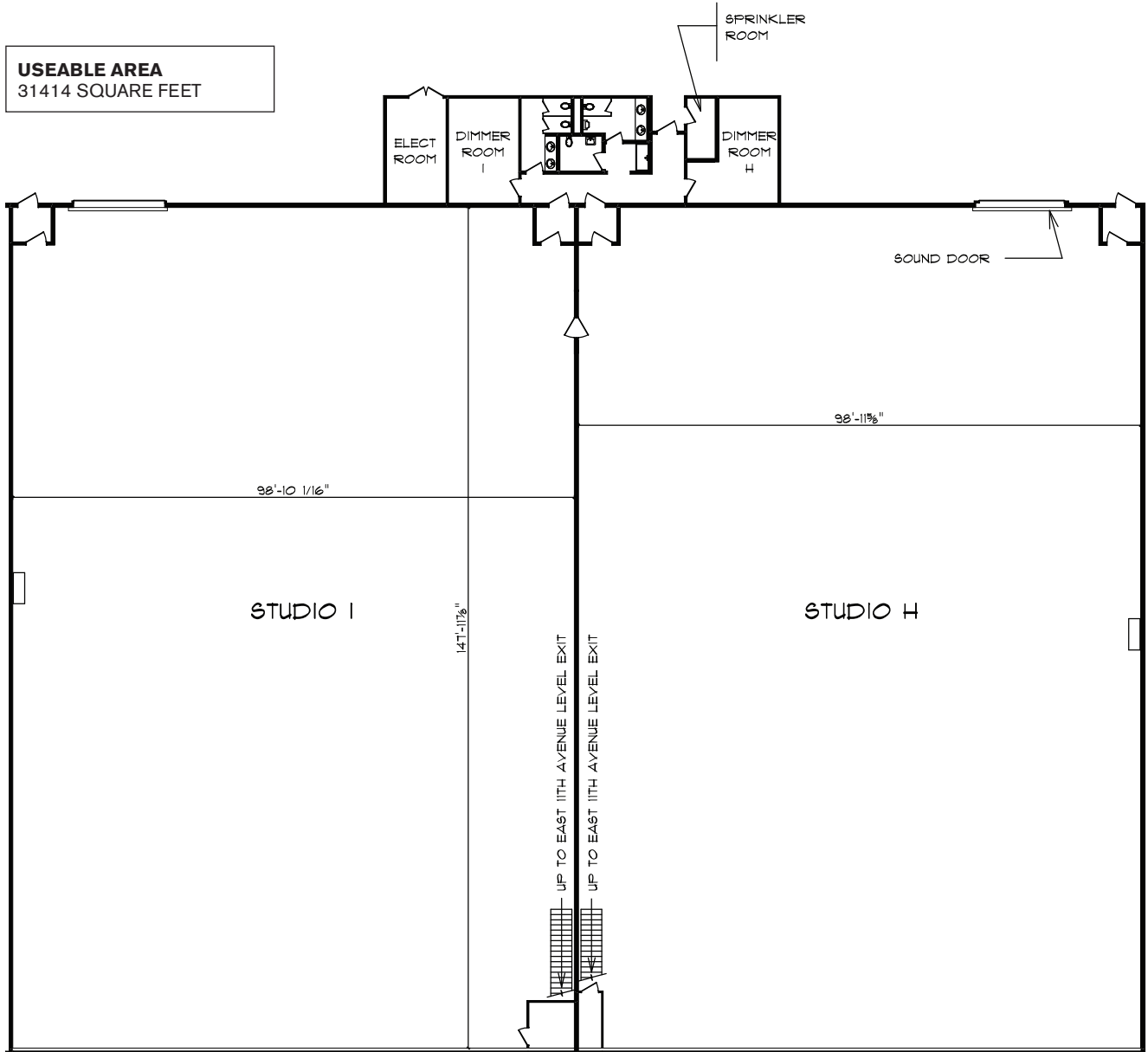
All buildings on the Vancouver Film Studios lot are equipped with 24-hour security.

Stage H

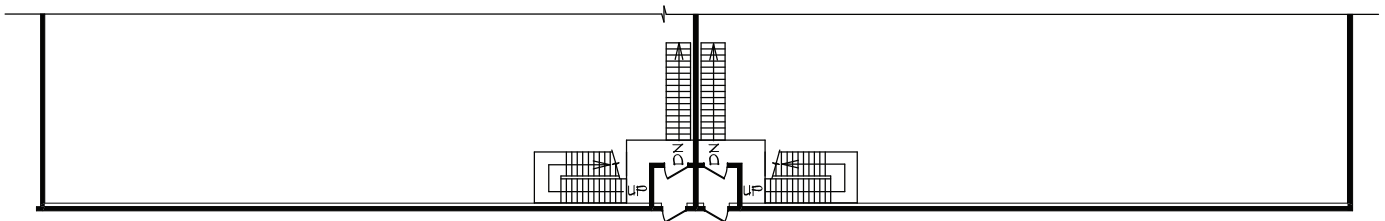
| | |
|-------------|---|
| SQUARE FEET | 15,000 |
| DIMENSIONS | 100' x 150' |
| HEIGHT | 40' |
| SOUND | Acoustical insulation 16' x 16' sound door Building acoustically designed with tilt up concrete walls |
| POWER | Directors control panels, four points 40 watts per sq. ft. 3 phase power services from two locations, each with four camlocks |
| AIR | Mechanical smoke exhaust fans Fresh air exchange heating |
| STRUCTURE | Cleats Protective roll up doors Wooden catwalk system Truss system for lights Truss load of 40 lbs/sq. ft. (average), max point load of 3,500 lbs. per truss Clearspan |

BUILDING HI

USEABLE AREA
31414 SQUARE FEET



CORNETT ROAD LEVEL



EAST 11TH AVENUE LEVEL

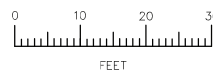
Vancouver Film Studios
Building HI
3625 East 11th Avenue
Vancouver, BC

Drawn By:



Gerry Parsons
BOMA CERTIFIED TECHNICIAN

December 18, 2007



Accuspace Measuring
www.accuspacemeasuring.com