

BUILDING H

Building H is a 15,000 sq. ft. sound stage which opened in April of 2003.

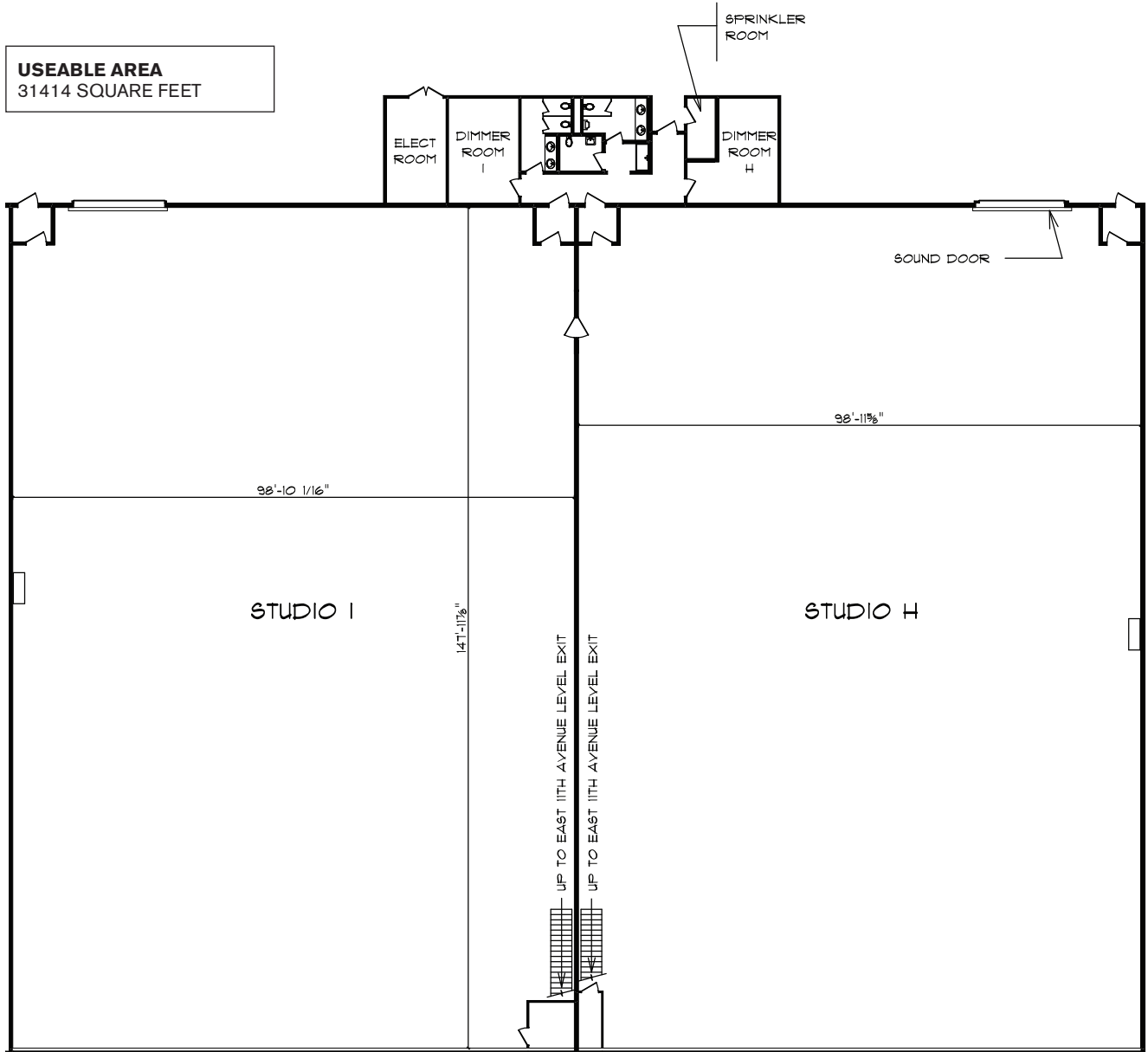
All buildings on the Vancouver Film Studios lot are equipped with 24-hour security.

Stage H

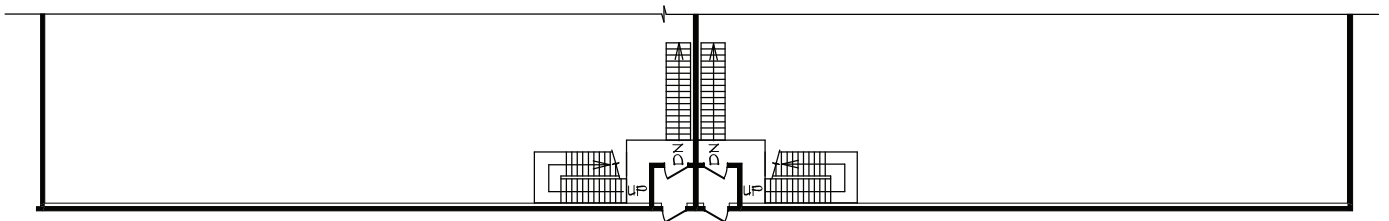
SQUARE FEET	15,000
DIMENSIONS	100' x 150'
HEIGHT	40'
SOUND	Acoustical insulation 16' x 16' sound door Building acoustically designed with tilt up concrete walls
POWER	Directors control panels, four points 40 watts per sq. ft. 3 phase power services from two locations, each with four camlocks
AIR	Mechanical smoke exhaust fans Fresh air exchange heating
STRUCTURE	Cleats Protective roll up doors Wooden catwalk system Truss system for lights Truss load of 40 lbs/sq. ft. (average), max point load of 3,500 lbs. per truss Clearspan

BUILDING HI

USEABLE AREA
31414 SQUARE FEET



CORNETT ROAD LEVEL



EAST 11TH AVENUE LEVEL

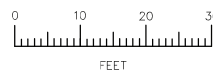
Vancouver Film Studios
Building HI
3625 East 11th Avenue
Vancouver, BC

Drawn By:



Gerry Parsons
BOMA CERTIFIED TECHNICIAN

December 18, 2007



Accuspace Measuring
www.accuspacemeasuring.com