

BUILDING B

Building B consists of two sound stages and a large adjoining office space. Stage B –1 and B-2 are 15,000 sq. ft. each. The office space is over 13,500 sq. ft. with plenty of private offices and bullpen areas. There is also a wardrobe area at the rear of the building complete with washing machine hook ups, changing rooms and a loading bay.

All buildings on the Vancouver Film Studios lot are equipped with 24-hour security.

Stage B-1

SQUARE FEET	15,000
DIMENSIONS	100' x 150'
HEIGHT	40'
SOUND	Acoustical insulation 16' x 16' sound door Building acoustically designed with tilt up concrete walls
POWER	Directors control panels, four points 40 watts per sq. ft. 3 phase power services from two locations, each with four camlocks
AIR	Mechanical smoke exhaust fans Fresh air exchange heating
STRUCTURE	Cleats Protective roll up doors Wooden catwalk system Truss system for lights Truss load of 40 lbs/sq. ft. (average), max point load of 3,500 lbs. per truss Clearspan

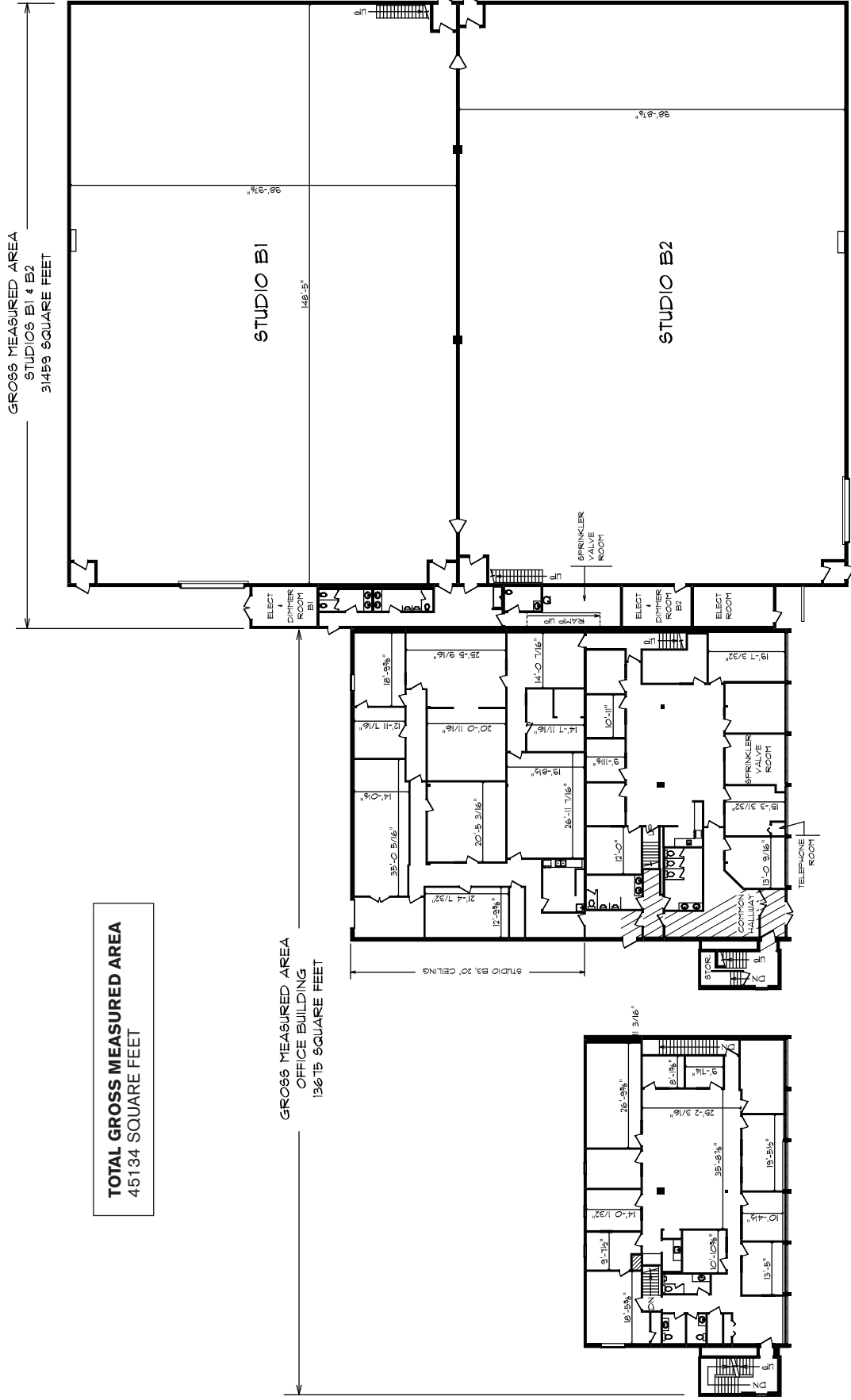
Stage B-2

SQUARE FEET	15,000
DIMENSIONS	100' x 150'
HEIGHT	40'
SOUND	Acoustical insulation 16' x 16' sound door Building acoustically designed with tilt up concrete walls
POWER	Directors control panels, four points 40 watts per sq. ft. 3 phase power services from two locations, each with four camlocks
AIR	Mechanical smoke exhaust fans Fresh air exchange heating
STRUCTURE	Cleats Protective roll up doors Wooden catwalk system Truss system for lights Truss load of 40 lbs/sq. ft. (average), max point load of 3,500 lbs. per truss Clearspan

Building B Offices

SQUARE FEET 13,700

FEATURES Wardrobe, Set Dec and Props areas, loading bay, washing machine hook ups, air conditioning, two kitchens, boardroom and over 20 private offices.




MAIN FLOOR

2ND FLOOR

TOTAL GROSS MEASURED AREA
45134 SQUARE FEET

GROSS MEASURED AREA
OFFICE BUILDING
13675 SQUARE FEET

GROSS MEASURED AREA
STUDIOS B1 & B2
31459 SQUARE FEET

<p>BUILDING B</p>	<p>Vancouver Film Studios Building B 3541 Cornett Road Vancouver, BC</p>	<p>Drawn By: </p>	<p>Gerry Parsons BOMA CERTIFIED TECHNICIAN</p>	<p>December 18, 2007</p>
	<p>Accuspace Measuring www.accuspace.measuring.com</p>		